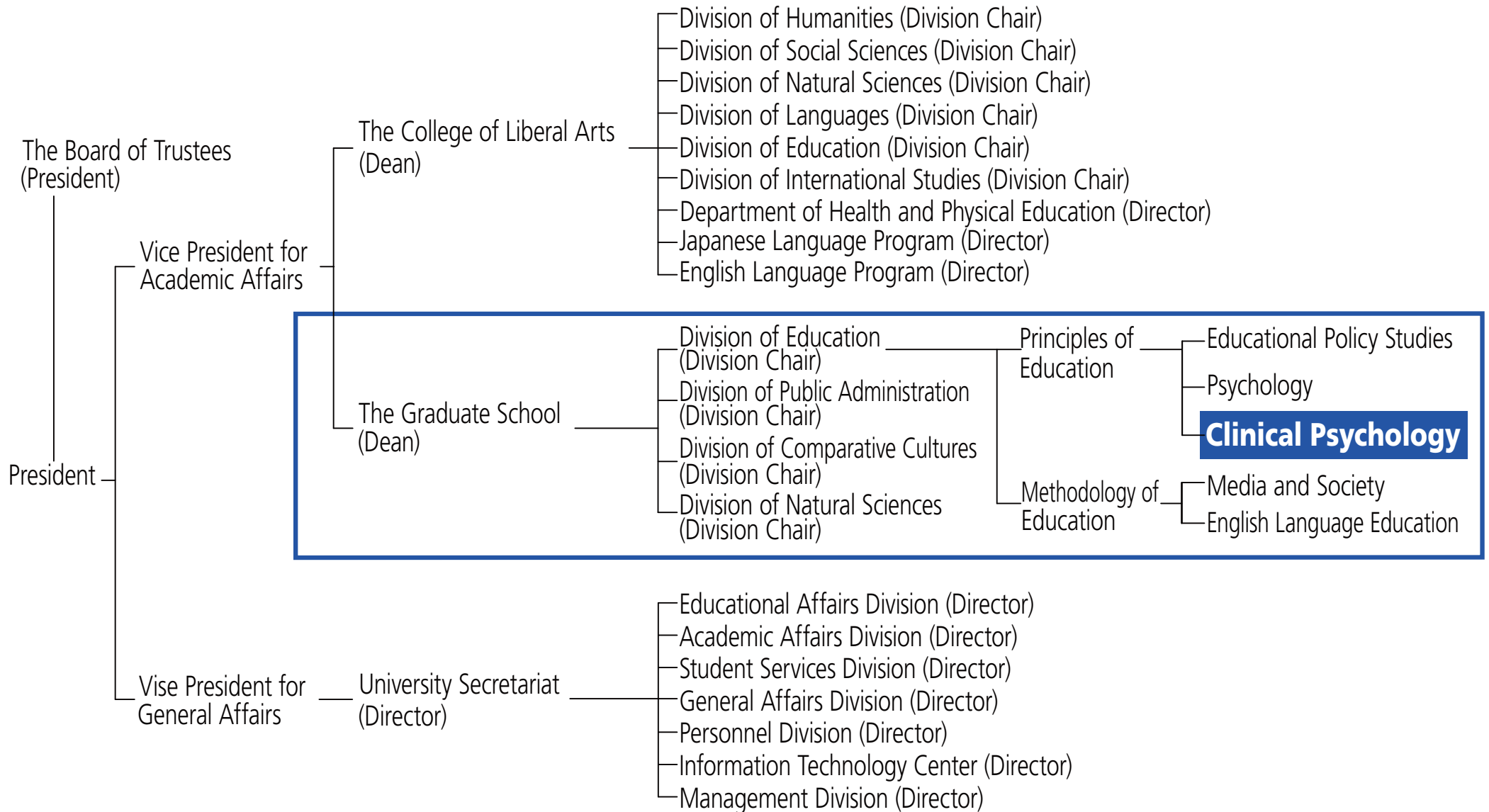


Commitment of ICU – Exploration over 50 Years

- **Serving God and People, Doing Liberal Arts (DLA) -**
- ▶ **Internal Mandate:** Creation of psychological peace and safe space
 - Clinical Psychology serves this aspect of the ICU commitment
- ▶ **External Mandate:** Donations and actions for international peaceful coexistence



Structure of the ICU Graduate School



Structure of the Education Program at ICU –Internationalism–

“Global Standard” Programs

- ▶ **International Faculty:** 35% of the faculty are from overseas
- ▶ **Units system compatible** with 56 universities in 21 countries (e.g., University of California system)
- ▶ **International Links and Network**
 - JICUF (Japan International Christian University Foundation in New York)
 - UBCHEA (United Board for Christian Higher Education in Asia)
 - ACUCA (Association of Christian Universities and Colleges In Asia)
- ▶ One of seven universities, and the only one in Asia, hosting a **Rotary International Master's program** in World Peace and Conflict Resolution
- ▶ **Overseas Master's students admission** in cooperating with Japan International Cooperation Agency (JICA)
- ▶ Member university of the **EU Institute in Japan (EUIJ) Consortium** (ICU, Hitotsubashi University, Tokyo University of Foreign Studies, and Tsuda College)
- ▶ Accreditation by the **American Association of Liberal Education (AALE)**

Clinical Psychology of ICU – Over the Post 50 years

Former Professors in Clinical Psychology in ICU

- ▶ TSURU, Haruo Introduced Guidance and Counseling to Japan
- ▶ HOSHINO, Akira A Pioneer of Cross-cultural Psychology
- ▶ DOI, Takeo Developer and Proponent of Japanese Psychoanalytic Theory

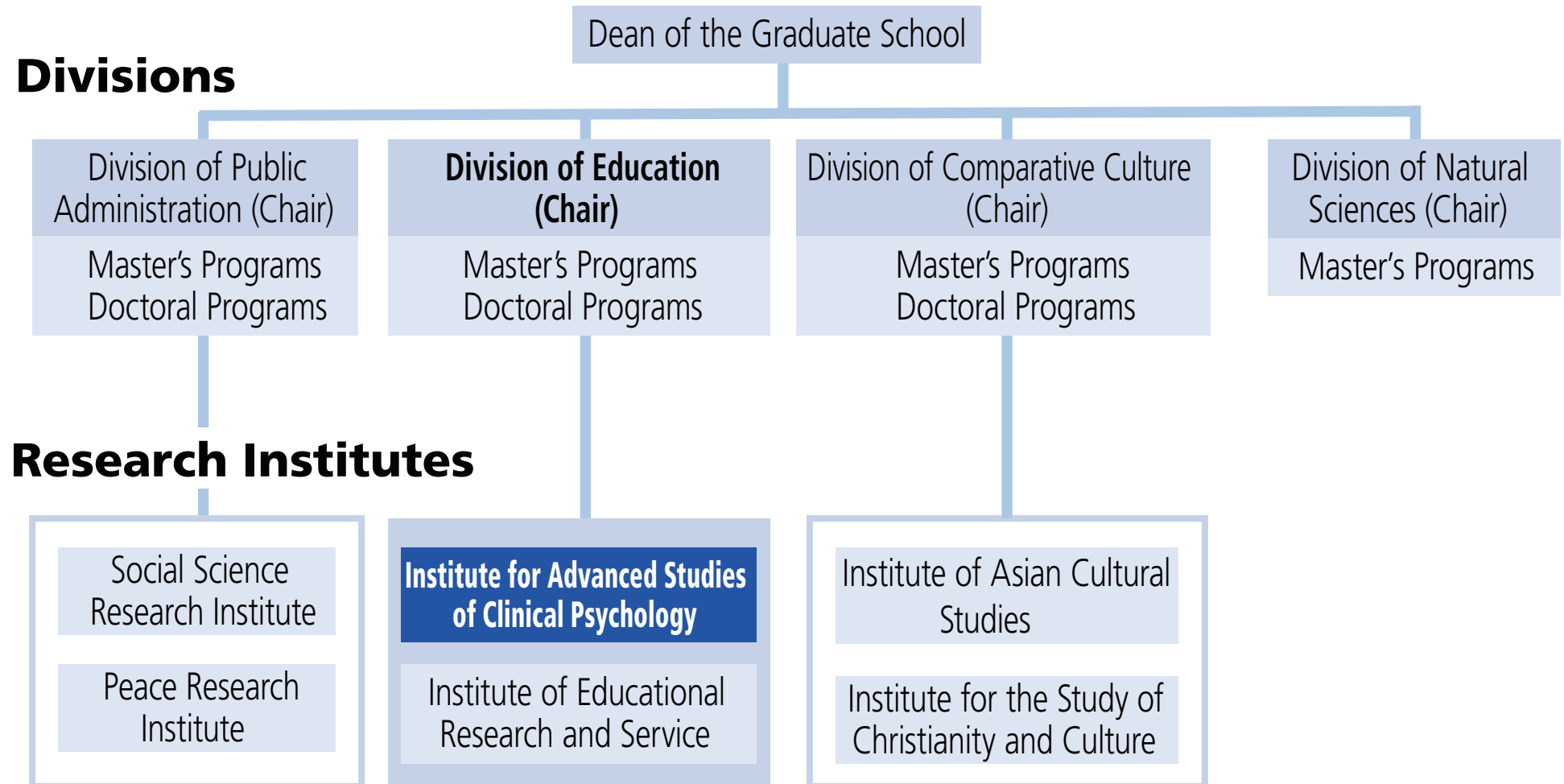
Former and Present International Advisors

- ▶ Carl R. Rogers Founder of Client-Centered Therapy
- ▶ Edward L. Pinney, Jr. Former President of American Association of Psychoanalytic physician
- ▶ Saul Tuttmann Former President of the American Academy of Psychoanalysis
- ▶ Saul Scheidlinger Former President of the American Group Psychotherapy Association

Present Activities

- ▶ Research, Practice, Development, and Popularization of Clinical Psychology and its techniques
 - Psychoanalytic Psychotherapy, Dynamic Psycho-Education, Person-Centered Guidance and Counseling

Structure of ICU Graduate School Programs

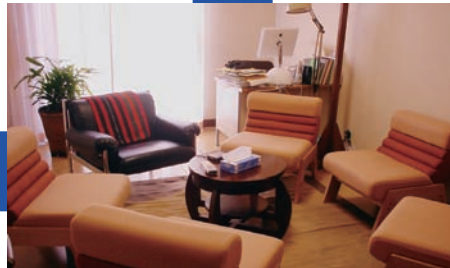


Institute for Advanced Studies of Clinical Psychology

International
Journal
of
Counseling
and
Psychotherapy
Publication



Institute Building



Interview Room



Study Tour



Interview Scene

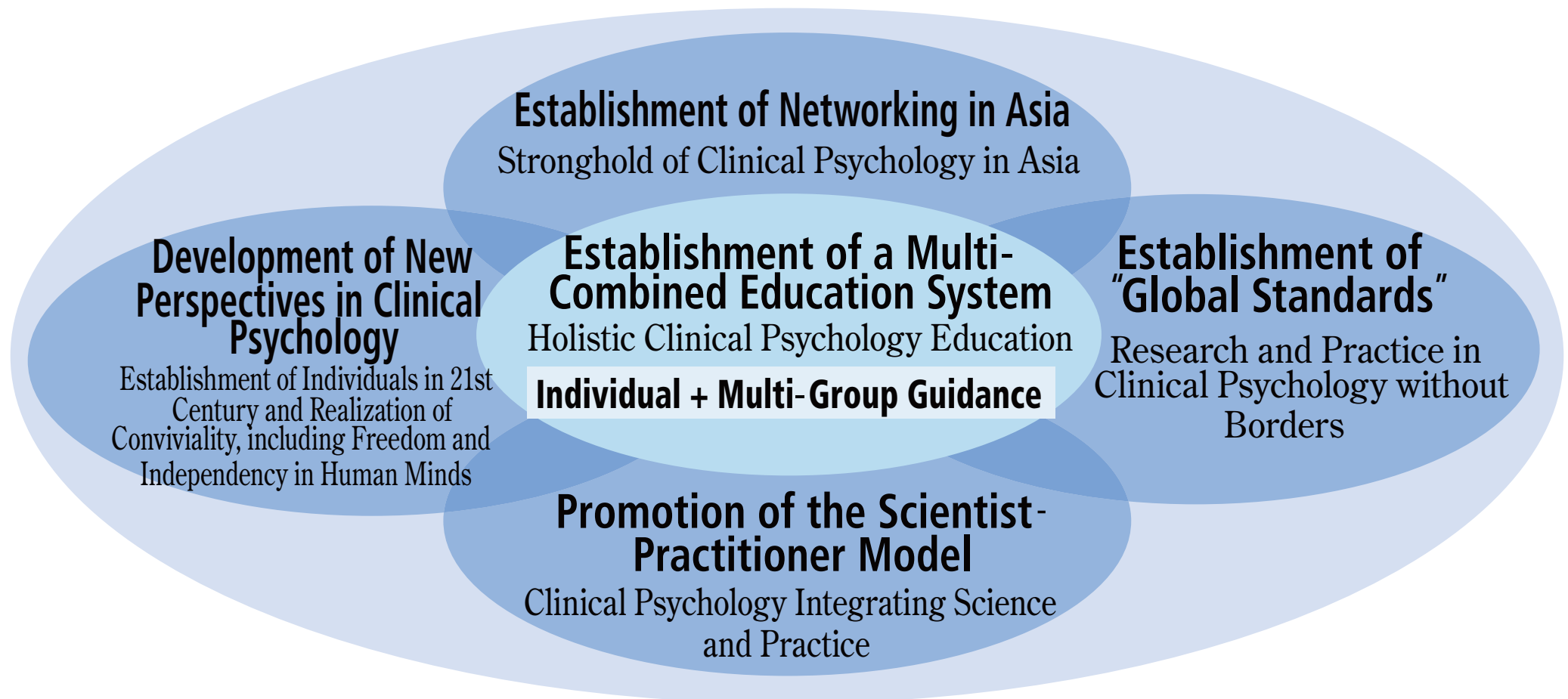


Daily Conference



International Conference

Tasks and Commitments of ICU Clinical Psychology Program

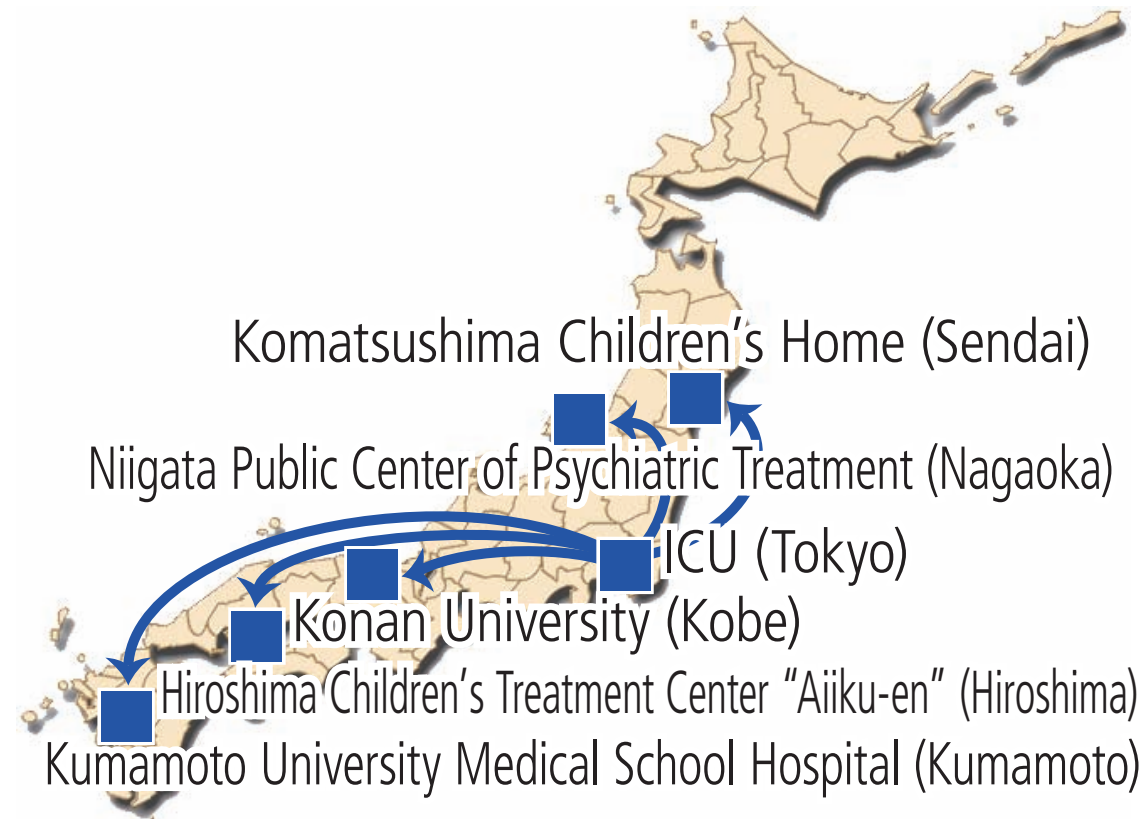


- Crisis in the Mind is a Worldwide Issue -

- ▶ A center for encouraging and developing new approaches and perspectives
- ▶ A center for training qualified clinicians and research leaders who can contribute to an international and multicultural society.

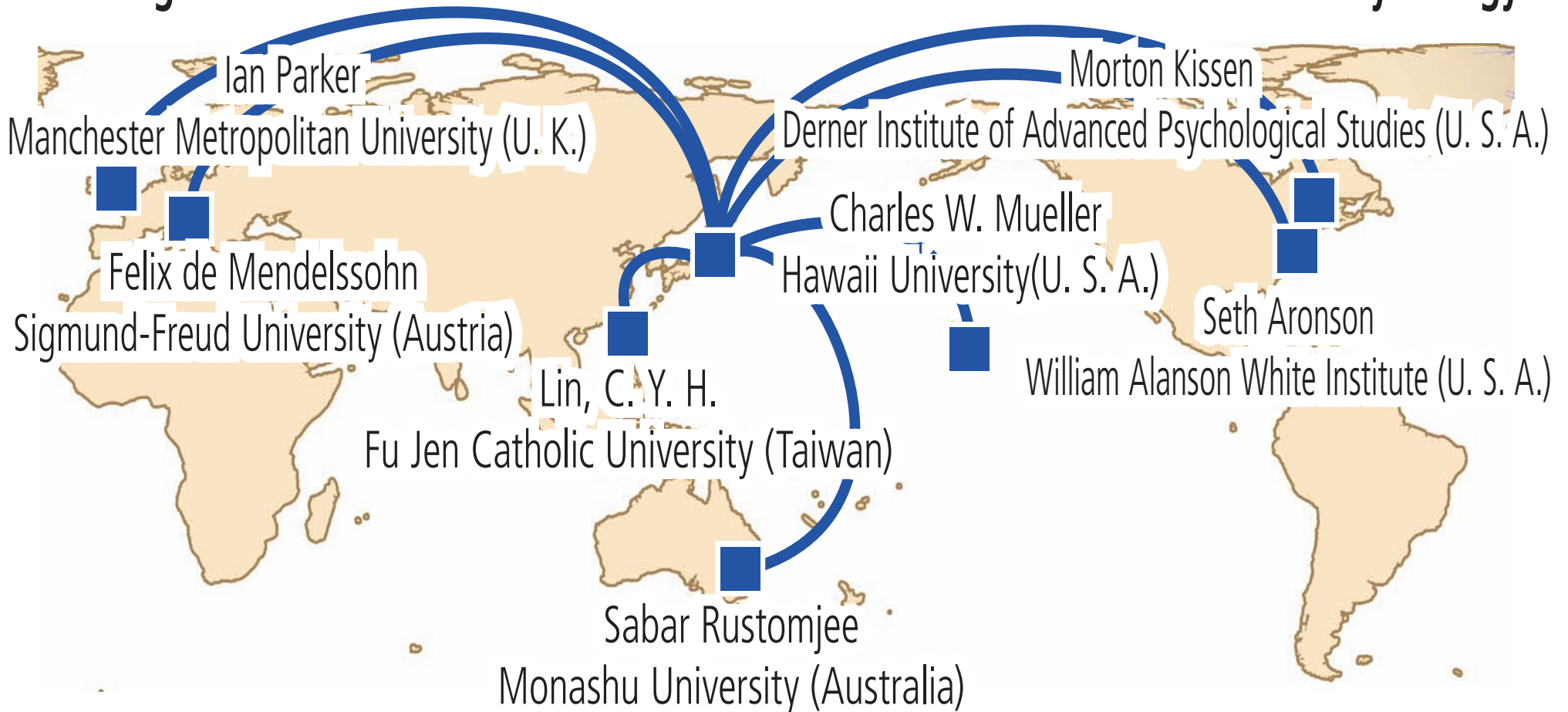
Efforts for International Cooperation System (1)

- Reinforcement of Human Networking, and National and International Cooperations -
 - ▶ To advocate more substantial educational tasks
 - ▶ To update theories and skills
 - ▶ To enrich faculty development, national and international internships



Efforts for International Cooperation System (2)

- Creating Network of Leaders of International Professional Scholars in Clinical Psychology -



From Japan to the World

Quest for **Scientist-Practitioner International Standard Model**

Efforts for Quality Education in the Graduate School (1)

Status of the Graduate School 1-2

The Graduate School seeks to enable students to master advanced levels of learning in specific fields based upon a broad acquisition of knowledge. It will provide scholarly training in the theory and professional application of scientific principles and develop the student's ability to do advanced academic research. ICU graduate students will be educated both in depth and breadth.

Graduate School Division of Education Bulletin Objectives of Clinical Psychology Major

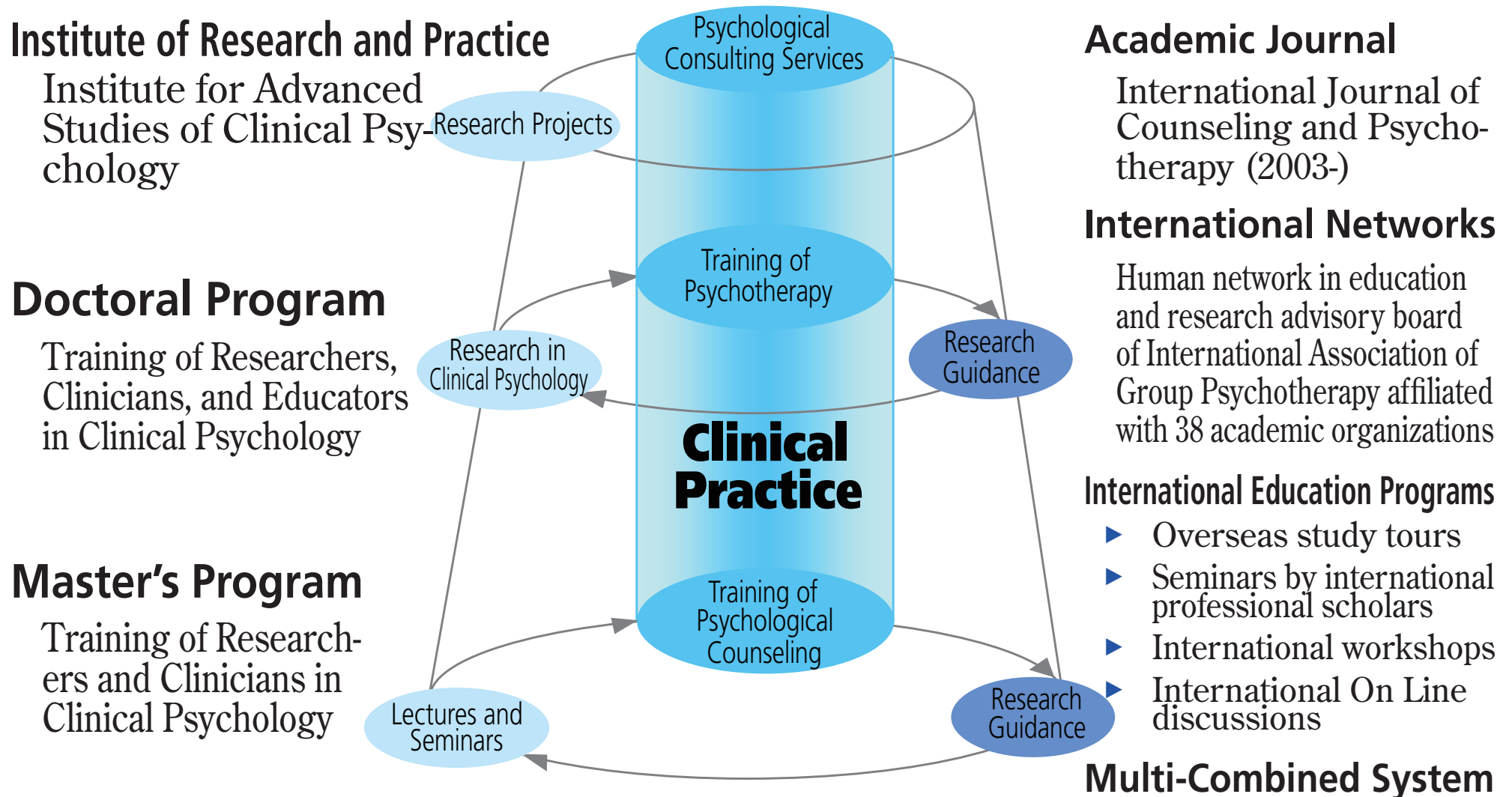
Major fields of research include clinical psychology practice, mental health, and psycho-education focusing on personal growth and development. Lectures, seminars, practicum, and research guidance are offered in order to train students for clinical practice in the fields of education, medicine, human resources, judicial systems, welfare organizations, and other educational / clinical settings.

Code of the Institute of Advanced Studies of Clinical Psychology (IASCP)

IASCP aims to promote advanced studies of clinical psychology, focusing on psychotherapy to promote mental growth, and carries out research activities and practical training and seminars in clinical psychology.

Efforts for Quality Education in the Graduate School (2)

-Structured Diagram of Curriculum and Research Activities-



Efforts for Quality Education in the Graduate School (3)

Master's Program: Global Standard Skills in Psychological Counseling

Courses	Foundation courses (outside of major)
	Required courses by Japanese Certification Board for Clinical Psychologist
	Required practicum
	Original practicum (national and international intensive practicum)
Thesis Guidance	All faculty (Multi-combined education system)
Thesis Evaluation and Final Examination	Master's thesis study plan, presentation of the Master's thesis, open presentation, and final examinations

Doctoral Program: Global Standard Skills in Research and Practice of Clinical Psychology

Training in Clinical Psychology	Training of psychotherapy and international practicum
Research Participation	International research projects by IASCP
Dissertation Guidance	All faculty (Multi-combined education system)
Dissertation Evaluation and Final Examination	Doctoral candidacy examinations, dissertation study plan, presentation of the dissertation, open presentation, and final examinations

Faculties and Faculty Development in Clinical Psychology at ICU

Job Title	Name	Main Research activities	Course Descriptions	Other activities
Professor	KOTANI, Hidefumi	Research for Psychoanalytic Psychotherapy and Group Psychotherapy	Studies in Clinical Psychology (a) I-II-III Special Studies in Clinical Psychology Interview I - II Practicum in Clinical Psychology	Board member of International Association of Group Psychotherapy, Director of International Association of Dynamic Psychology, Executive board member of the Japan Association of Group Psychotherapy
Professor	TOMABECHI, Noriaki	Research in Adolescent Counseling	Studies in Clinical Psychology (b) I – II –III Special Studies in Clinical Psychology I Seminar in Clinical Psychology Assessment II Practicum in Clinical Psychology	Director of Japan Association of Student Counseling
Associate Professor	NISHIMURA, Kaoru	Research in Psychological Assessment and Interventions to Adolescents	Studies in Clinical Psychology (c) I – II – III Special Studies in Clinical Psychology II Seminar in Clinical Psychology Assessment I Practicum in Clinical Psychology	Director of the ICU Seminar, Board member of the Japan Association of Group Psychotherapy (Director of Academic Publication)
Assistant Professor	NISHIKAWA, Masahiro	Research in School and Educational Clinical Psychology	Seminar in Clinical Psychology Assessment I Basic Practicum in Clinical Psychology Practicum in Clinical Psychology Special Study in School Clinical Psychology	
Lecturer	SASAKI, Hiroko	Research in Psychological Assessment by Projective Technique	Special Study in Projective Technique Seminar in Clinical Psychology Assessment I – II Basic Practicum in Clinical Psychology	

To Faculty Development: Self-Evaluation in accordance with the Criteria of Advisory Board and International Standards

Development for Active and Creative Educational Programs (1)

- Programs in Action and Contemplation -

2005 Academic Year

- ▶ **Development of the International Training Workshop Programs**
 - Organizing workshops for core treatment of clinical psychology and psychotherapy regularly in cooperation with leading graduate schools and institutes throughout the world.
- ▶ **Maintenance of the Facilities of the Institute for International Collaborative Researches**
 - Maintaining the facilities for experimental studies.
- ▶ **Development of the Faculty Development System Utilizing International Online Discussion Lists**
 - Research activities about global standards of methods of education and training in psychotherapy, and examination of an international model of faculty development.
- ▶ **Enlargement of the International Study Tours to the Pacific Rim Areas**
 - Expansion of the international study tour to the Pacific Rim areas for research activities concerning cultural factors in psychotherapy, in cooperation with Hawaii University.

Development for Active and Creative Educational Programs (2)

- Programs in Action and Contemplation -

2006 Academic Year

- ▶ **Cooperative Education through Lectures via Television Conference System**
 - Establishment of the international lecture courses of advanced techniques and theories in clinical psychology
 - International simultaneous co-guidance system
 - National delivery of ICU lectures and implementation of the collaborative class with Kumamoto University Medical School
- ▶ **Overseas Collaborative Experimental Research**
 - Inviting International Professional Scholars and Practitioners: collaborative experimental research, organizing the international conference inviting overseas researchers and graduate students for discussion.
- ▶ **Organizing International Conferences about Graduate School Curriculum**
 - Discussion and examination of global standard curricula, and system of curriculum exchange between graduate schools
 - Examination of the system of program evaluation and promotion of an international faculty development system
 - Integration of proposals for international cooperation in graduate school education in clinical psychology
- ▶ **Development of Teaching Materials**
 - Efforts to standardize education and training in clinical psychology internationally in order to strengthen the international network of education in clinical psychology

Development for Active and Creative Educational Programs (3)

- Anticipated Results -



► Contribution to Clinical Psychology for the 21st century from Asia

- Submission of clinical models and theories for creation of psychological peace in the 21st century